



CMM-Manager 2021

What's New

21st of September 2021 | QxSoft, LLC | 631 Bear Run Lane | Lewis Center, OH | QxCMM.com



CMM-Manager 2021

What's New

Overview

- Improved CAD and Graphical Report Visualizations
- Usability and Ease of Use Enhancements
- Updated Automation and IPC Interface
- CMM Monitoring Companion App
- 30+ Customer Specific Requests Addressed



Language Support

English, Chinese, Czech, French, German, Italian, Japanese, Polish, and Spanish

CAD Importer Support

Spatial 3D InterOp Release 2020 1.0.1. The following formats and their versions are supported:

- | | |
|---------------|------------------------------------|
| • ACIS | R1 – 2020 1.0 |
| • CATIA V4 | 4.1.9 - 4.2.4 |
| • CATIA V5/V6 | V5 R8 – V5/6 R2020x |
| • DWG | 2.5 – 2021 |
| • Inventor | V11 – 2021 |
| • JT | JT 8.x, 9.x, 10, 10.2, 10.3 & 10.5 |
| • NX | NX 1 – NX 1926 |
| • Parasolid | 9.0.x – 32.0.x |
| • Pro/E | 16 – Creo 7.0 |
| • Solid Edge | V18 – SE 2020 |
| • SolidWorks | 2003 – 2020 |
| • STEP | AP203, AP214, AP242 |
| • VDA-FS | 1.0 – 2.0 |

What's New:

-Notable Enhancements for Graphical Reports, Path Planning & Path Display, Excel / DDE Reporting, Measure Cross-Section, Feature Constructions, Open GL Anti-Aliasing, Fitting Algorithms, and SpaceMouse Support.

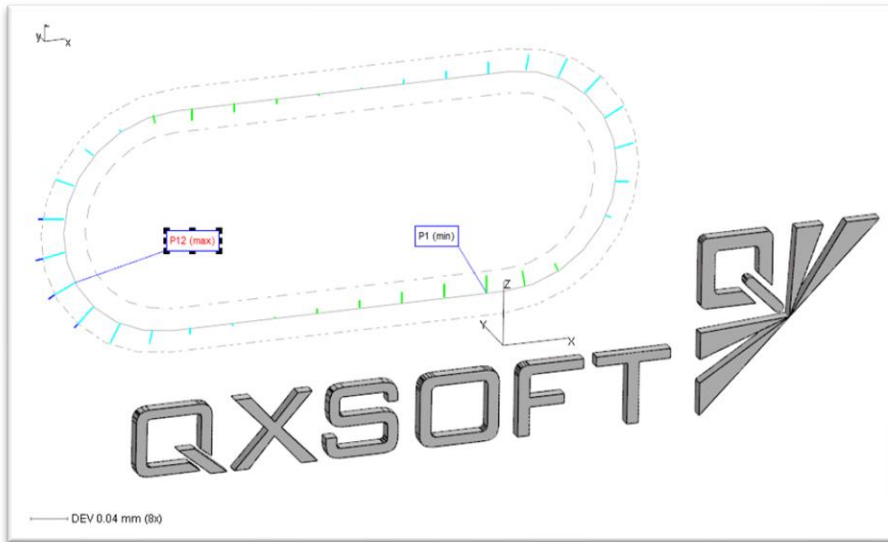
-Driver Updates for zCat, Mitutoyo, Hexagon, UCC, Nikon / iNexiv.

-64-bit OS support for Caliper Designs PCI, Mitutoyo UD1, Kreon Arm and Romer Arm.

-Bug Fixes for PH20, Path Planning, Gear, and MS Excel / DDE.

Notable Enhancements

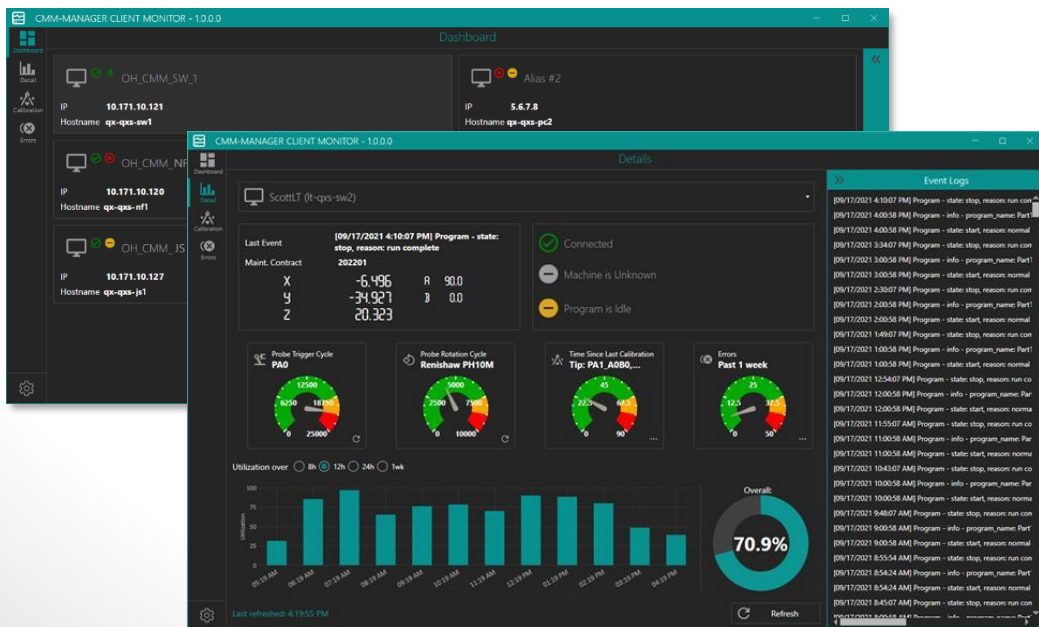
- Improved Tolerance Band Display in Graphical Report
- Add Path Planning (Link Paths) for Edge and Angle Points
- Machine Z Ceiling Participates in Path Planning
- Batch MS Excel / DDE Editing (update File Path)
- Measure Cross Section and Complex 2D CAD Enhancements
- Construct Line from Ellipse axis
- Improved Shaded Edge CAD Rendering (anti-aliasing)
- New "Fixed Radius" Circle Fitting Algorithm
- 3Dconnexion SpaceMouse (Certified application)
- CAD Teach Point for Vision includes CAD Point as well as Surface
- Feature Database Filtering and Sorting
- CMM Monitoring Companion App
- Updated IPC interface (2.0)



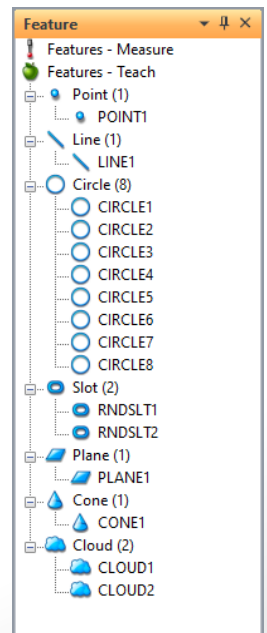
IMPROVED CAD & REPORT RENDERING

3DCONNECTION SPACEMOUSE

CMM-Manager 2021



CMM MONITORING COMPANION APP



DATABASE SORTING

Driver Updates

- **Caliper Design**
 - Added 64-bit support
- **Hexagon DC1**
 - DONE Button allows Trigger Verify
- **Kreon Arm**
 - Added 64-bit support
- **LK Metrology**
 - Added option to Home X Axis first
 - Fixed - Joystick Trigger does not always register
 - Fixed - SP25 closed-loop calibration may fail
- **Mitutoyo UC**
 - Improved SP25 calibration especially with longer stylus modules
 - Improved SP25 unknown scan data control - pitch and stop zone
 - New Controller Error Handling for Probe Inhibit
- **Mitutoyo UD1-PCI**
 - Fixed - driver may fail to load "UD1W.dll"
- **Romer Infinte / MCA II Arm**
 - Fixed - connection issue on Windows 10 64-bit system using WinRDS
- **Sheffield MP/SMP DCC**
 - Fixed - probe angle in DRO display not updating
- **UCC Direct 2.0**
 - Fixed - "Incorrect arguments" error due to sending PCS for joystick
 - Fixed - older UCC configurations may not support JogDisplayCsy command
- **zCat**
 - Fixed - "zCatParcer" error when connecting

Bug Fixes

- Link path may not be created properly for Transform Rotate operation
- Runout calculation for cone feature incorrect
- Shop floor launcher may crash on launching new program after running another program
- CMM-Manager keeps Excel file locked after DDE operation
- DDE does not always output Feature Geometry in current Ref Frame
- DDE issue when minimizing CMM-Manager
- Clicking on Define Tolerance button on a blank document causes CMM-Manager to crash
- Customized keyboard shortcut settings are not sticky between sessions
- Running a program with Auto Feature commands causes CMM-Manager to crash
- Missing and offset images in Excel report output
- Best Tip for CAD Feature results in unsupported PH10 probe orientation
- Changing GD&T Preferences from ASME to ISO does not stick
- Program Runtime format is not displayed correctly on 32-bit OS
- Software crash when constructing a circle tangent to a line and a ref. frame axis at runtime
- Gear Report Graphical variation bar graph is missing
- Cannot create gear tips or gear inspection path with PH20 on certain internal gears
- Gear parameter check (base diameter vs root diameter) is incorrect
- OOT positional report items with "Feature Rpt" option may not be highlighted in the Report database
- Software crash when using Non-Repeatable Tip Calibration
- SPACE key won't work as trigger after updating feature name on measurement counter dialog for manual system
- Software crash after saving and load Measure & Scan Circle operation with 4th plane
- CAD taught 2D Arc display incorrect after re-pick CAD