



# CMM-Manager 2023

What's New

December 22, 2023 | QxSoft, LLC | 759 Carle Ave | Lewis Center, OH | [QxCMM.com](http://QxCMM.com)

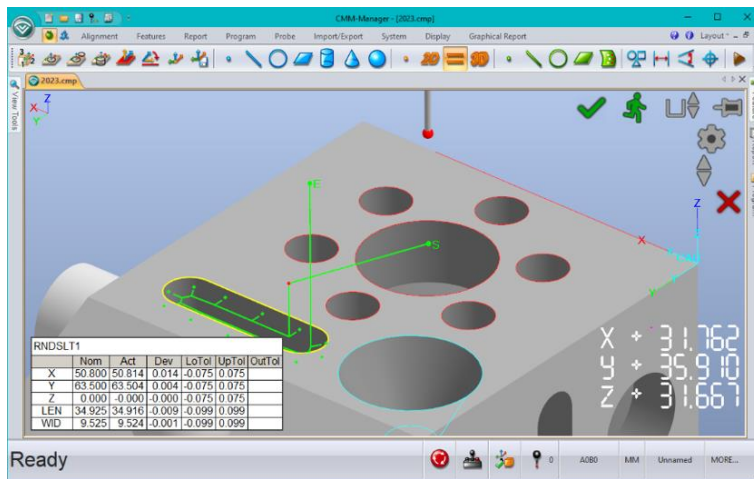


# CMM-Manager 2023

version 12.3.1.9387

## Overview

- Added support for Renishaw Equator gauging system
- Added support for API Radian (LaserTracker)
- Automation Software
- Graphical Reporting Updates
- UI Improvements
- 30+ Customer Specific Requests Addressed



## Language Support

English, Chinese, Czech, French, German, Italian, Japanese, Polish, and Spanish

## CAD Importer Support

*Spatial 3D InterOp Release 2024 1.0* The following formats and their versions are supported:

- ACIS - R1 – 2024 1.0
- CATIA - V4 – 4.1.9 - 4.2.4
- CATIA - V5/V6 V5 – R8 - V5/6 R2024
- DWG - 2.5 – 2024
- Inventor - V7 – 2024
- JT - JT 8.x, 9.x, 10, 10.2 - 10.7
- NX - NX 1 – NX 2306
- Parasolid - 9.0.x – 36.0.169
- Pro/E - 16 – Creo 4.0-10.0
- Solid Edge - V18-V20 – SE 2023
- SolidWorks - 2003 – 2024
- STEP – AP203, AP214, AP242
- VDA-FS – 1.0 – 2.0

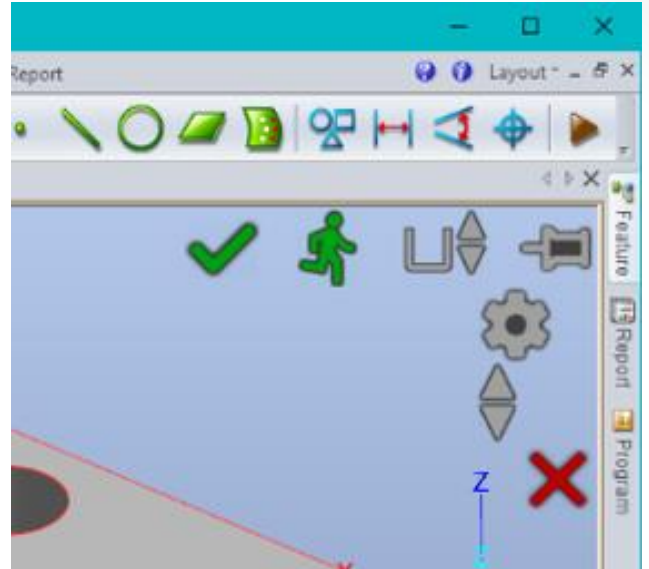


## What's New:

- Renishaw Equator
- API Radian Laser Tracker
- Automation Software
- New Graphical Report functionality
- UI Enhancements
- 30+ customer specific requests addressed

## Notable Enhancements

- Renishaw Equator gauging system - 'easy to use' software option verses the traditional DMIS based solution.
- API Radian Laser Tracker – Supported probes include traditional SMRs as well as vProbe handheld system.
- Automation Software – Easily interface your CMM-Manager equipped measuring instrument into a manufacturing cell or industrial robot for 'lights out' operation.
- Graphical Reporting – greater customization including display of User Notes, Best-Fit results, and VB Variable(s)
- UI Improvements – simplified measurement UI, high contrast report preview, automatically verify features, resizable tiles in Client Monitor App.



NEW SIMPLIFIED MEASUREMENT UI DISPLAYED IN CAD VIEW



SUPPORTS MOST INDUSTRIAL AUTOMATION SYSTEMS



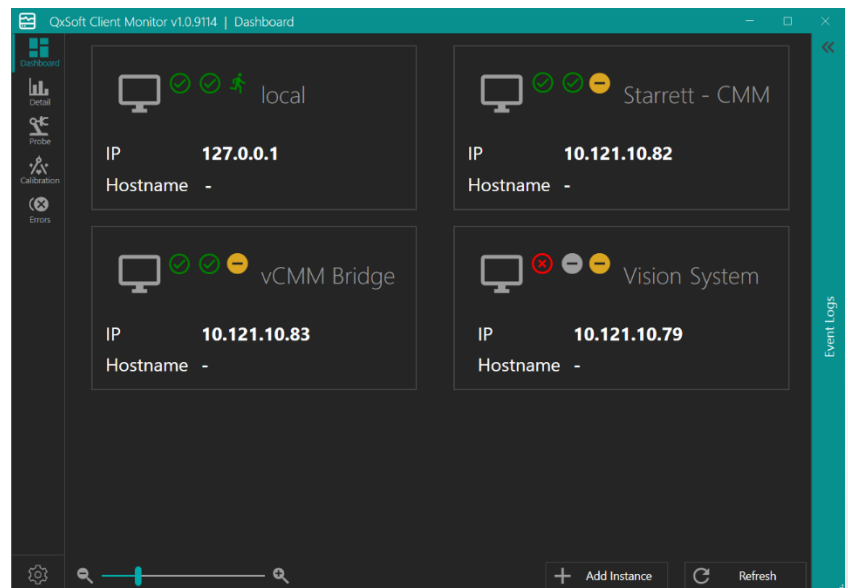
API RADIAN LASER TRACKER



RENISHAW EQUATOR GAUGING SYSTEM



TURN-KEY AUTOMATION SOFTWARE SOLUTION



NEW RESIZABLE TILES ON CLIENT MONITOR APP

## Driver Updates

- **I++**
  - Send DME commands from directly CMM-Manager – i.e. RWReQualify(Head())
  - Improved X-Path / UCC Sync – fixes crash with incompletely defined tools.
- **Renishaw UCC**
  - Add support for MMI-2 manual controller.
  - Fixed failure to send tool offset to UCC when re-connecting.
- **Mitutoyo UC**
  - Allow smaller pitch for SP25 unknown scan
  - Fixed SP25 calibration output not scaled to Scale Factor
  - Fixed software crash upon connection due to unexpected PHC response
- **Zeiss C99** - Allows to set joystick backoff distance.
- **B&S Sharpe2** – Resolved communication issues when using USB adaptor.
- **Faro Arm** - TP20 trigger not detected reliably on Faro USB Arm
- **API Tracker** – Newly supported device.
- **Renishaw Equator** – Newly supported device.

## Bug Fixes

- Edge/Angle points did not simulate or verify when using the simulate/verify function
- Edge Point could show false error "two vectors are not perpendicular"
- 2D scan feature location should not be projected to working plane
- Edge Points in Points page sometimes did not snap points to the nearest edge
- Probe Assembly dialog always shown in 3 decimal places even for inch
- No verify button for Manual Measure Hole Pattern
- Furniture did not stay hidden across sessions
- No prompt to save project file upon closing with changes made to graphical report
- Probe display incorrect during probe change (above actual position)
- Operation dialog shown on main monitor when CMM-M was running on second monitor
- Help desk file export did not include files in all subfolders
- Line-Circle intersection did not display points when axis line was used
- Re-Boundary CAD surfaces on some models could cause software crash
- Exported DXF Curves could not be opened in Fusion 360 / Autodesk
- Not all features translate after cut/paste
- Certain STEP model dimension became much larger when imported
- SP25 scan program execution could use wrong approach and backoff distance
- Selecting multiple features for construction may cause software crash
- Wrong T deviation output when actual and nominal ref. frames were different
- Homing in SFL without configuration file would cause the software to freeze
- Certain Construct Point operation in a program could cause software crash upon file close
- Failed to close programs with collapsed Program Groups with disabled Get Probe Assy operations
- Default Vision layouts included incorrect DRO window
- Error constructing mid-plane of two circular planes
- Construct Bestfit Plane probe comp wrong when PCS Z-axis was inverse of nominal plane direction
- Convert Excel to CSV may fail due to non-existent cached file path
- Gasket scan not working properly in INCH mode
- Ellipse fitting issue with probe comp
- Background was not white when printing the display window

## Supported Operating Systems

- Windows 11 Pro or Enterprise
- Windows 10 Pro or Enterprise
- \*Windows 7 / 8 may still work, but not officially supported or tested

\* CAD Converter 2023 or later no longer supports 32-bit OS, but CAD Converter 2022 can be used with CMM-Manager 2023 on 32-bit OS

## How to Upgrade

- Users that have purchased new software on or after December 1, 2022, or have active SSC / Software Maintenance are eligible for free upgrade to CMM-Manager 2023
- Contact our support team to request license update – [license@qxcmm.com](mailto:license@qxcmm.com)
- Download at - [qxcmm.com/download](https://qxcmm.com/download)